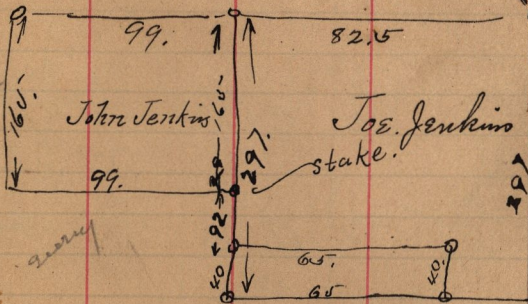


12-138 S. C. & M. J. Stevens to Anton Drago -
 P + N. E. 1/4 Sec. 5 T. 5. N. R. 1 - W. P. 74. 45 ft S
 0° 33' N. ^{from} of N. E. cor. of 1/4 Sec. + S 89° 25' W 719. 45
 ✓ ft to E. line of Wash. Ave. to a point of beg. thence
 S 89° 15' E parallel to N. line of said Ave. E. line of
 said Ave. 58. ft E. parallel to N. line of said
 Sec. to W. line of Ogden Ave. N. along W. line
 of Ogden Ave 58. ft W parallel to said 1/4
 Sec. to beg.

Dec. 1st 1891 -

Survey made for Joe. Jenkins on
 Lot 7 - B-6 - Plat "A"

Beg. at a pt 82.5 ft N. + 297. ft S.
 of N. E. cor Lot 7. E 65. ft N 40. ft.
 W 65. ft S 40. ft to beg.



Sta. 80+06.1
 = Cor. estab. by decree
 of Court (J. G. H. vs.
 J. W. H. 20-10-1891
 Case - Div. 2. J. H.

N. E. cor
 Lot 7.
 B-6 -
 according to
 City Mts

See Field
 Book 14
 Page 63
 for John
 Jenkins.

Self + John Board